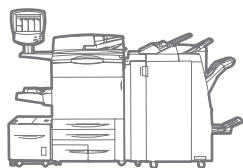


WorkCentre®
7755 / 7765 / 7775
Tabloid-size
Color
Multifunction Printer



Xerox® WorkCentre® 7755 / 7765 / 7775 Multifunction Printer Evaluator Guide



About this Guide

This guide introduces you to the WorkCentre® 7755 / 7765 / 7775 color multifunction printer, and aids you in your evaluation process.

Section 1: Evaluating Workgroup Color Multifunction Printers

- 3 Overview
- 4 Evaluate Productivity
- 6 Evaluate Versatility
- 8 Evaluate Installation and Deployment
- 9 Evaluate Ease-of-Use and Management
- 12 Evaluate Reliability
- 13 Evaluate Security Capabilities
- 15 Evaluate Cost Control
- 16 Evaluate Finishing Capabilities

Section 2: Introducing the Xerox WorkCentre 7755 / 7765 / 7775 Multifunction Printer

- 17 Product Overview

Section 3: Inside the WorkCentre 7755 / 7765 / 7775 Multifunction Printer

- 19 Feature Review

Section 4: Configurations, Specifications, Supplies, Support, Options and Additional Information Sources

- 20 Configuration Summary
- 21 Specifications
- 22 Supplies and Options
- 23 Support and Additional Information Sources

Section 1: Evaluating Workgroup Color Multifunction Printers

Overview

Based on continuous study of our customers' productivity requirements, Xerox recommends that the following criteria be used when evaluating which department-class color multifunction printer to purchase for your office.

Productivity

Can the device keep up with the demands of your daily and monthly workloads?

Versatility

Can the device be customized to meet your specific needs?

Installation and Deployment

How does the device ease the demands of the deployment process?

Ease-of-Use and Management

Does the device include tools and features to lighten the load for your IT staff?

Reliability

Is the device robust enough to meet your needs, and is it backed by quality service?

Security

Does the device help keep your confidential information private?

Cost Control

Can you monitor and control your organization's cost of printing?

Finishing

Can the MFP provide the distribution-ready documents you require?

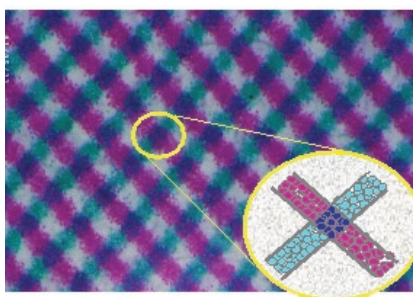
This section examines each of the above evaluation criteria in greater detail, covering the specific features and performance attributes you should look for in a black-and-white workgroup MFP. When the same criteria are used to evaluate every device under consideration, you'll see how the WorkCentre 7755 / 7765 / 7775 multifunction printer excels against other manufacturers' products.

Section 1: Evaluating Workgroup Color Multifunction Printers

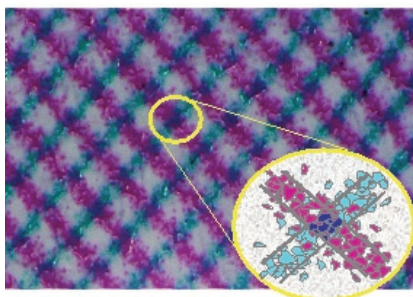
Evaluate Productivity

In addition to actual print engine speed, consider the factors that affect overall throughput. Are the device's scanning and faxing features powerful enough to support the demands of your busiest departments? Is the device appropriately sized for the entire workgroup? Can important features be used simultaneously, or are employees forced to wait for the device to become "free"? Is the system designed to minimize network traffic? Can device functions be monitored from users' desktops and/or at the device?

The Xerox EA Toner Difference



Xerox EA toner.



Conventional toner.

How the WorkCentre 7755 / 7765 / 7775 multifunction printer exceeds the productivity requirement:

Speed

The productivity of the WorkCentre 7755 / 7765 / 7775 starts with the fast print engine, which delivers 55 ppm black-and-white and 40 ppm color in the WorkCentre 7755, 65 ppm black-and-white and 50 ppm color in the WorkCentre 7765, and 75 ppm black-and-white and 50 ppm color in the WorkCentre 7775. Powerful scanning capabilities include single-pass duplex scanning at up to 80 ppm black-and-white and 50 ppm color, DADF capacity up to 250 sheets, resolutions from 200 x 200 dpi to 600 x 600 dpi, and support for multiple scanning destinations. All network-print-enabled configurations come with the powerful Xerox controller, which features a 1.33 GHz Freescale Processor and 2 GB of memory. This controller enables fast first-copy-out times of 5.5 seconds for black-and-white and 8.9 seconds for color, and the machine warms up in less than 28 seconds from low-power mode.

Image quality

The WorkCentre 7755 / 7765 / 7775 is based on cutting-edge technology that delivers reliable, best-in class image quality. These technologies include:

- **EA-HG Toner** — Emulsion Aggregate High-Grade toner is chemically grown to deliver small, uniformly shaped particles that result in crisp text and images, vibrant colors and smooth transitions.
- **Trickle Charge Development** — Developer material is included in the toner cartridges, enabling fresh developer to be constantly added and delivering consistently high quality print after print and copy after copy.
- **Belt Fusing** — the belt fuser has an extended contact area, meaning toner adheres more completely to the pages — ensuring higher quality at faster printing speeds.
- **Micro Tandem Engine and Intermediate Belt Transfer** — Cyan, magenta, yellow and black colors are processed individually, and the images are transferred onto an intermediate image belt,

which registers images before they are transferred to the page. A two-sided print passes through the print engine only twice, with better image registration and printing reliability.

Network performance/concurrency

The WorkCentre 7755 / 7765 / 7775 is easy on your network and avoids bottlenecks at the front panel. With RAM collation, files are sent over the network just once, no matter how many sets are printed. Job pipelining allows the MFP to process print jobs even if the print engine is busy with an earlier print job, optimizing system performance by avoiding delays during job processing.

Monitoring system status

There are no unknowns. Up-to-date information on every job — print, copy, scan, email, or fax — plus in-depth device information at your fingertips. Both at the device and from your desktop, you can manage documents and jobs through an integrated job queue, display job progress and status, and manage jobs all with a few mouse-clicks or button pushes.



WorkCentre 7775 shown with High Capacity Feeder and Light Production Finisher

Section 1: Evaluating Workgroup Color Multifunction Printers

Evaluate Versatility

How many functions can the device perform? Can it support the media types and capacity users require? Does the copier/printer offer the kinds of finishing options that can help your staff perform their jobs more efficiently?

How the WorkCentre 7755 / 7765 / 7775 multifunction printer exceeds the versatility requirement

Scan features

Give your hard copy documents new life as digital files. Make the best use of both hard copy and digital files and use the WorkCentre 7755 / 7765 / 7775 to move, manage, manipulate, capture, repurpose and distribute your documents via email, internet fax, embedded fax, network server fax or network scanning. Choose the file format (PDF, JPEG, TIFF) and compression (MRC, JBIG2) that works best for you with Xerox optional document distribution services:

- **Network Scanning** offers a whole new set of choices. This versatile solution lets you send hard copy documents to a wide range of destinations, where they can be integrated into existing networks and client applications, or into customized image capture and workflow management solutions provided by Xerox or by Xerox Alliance Partners.
- **Scan to PC Desktop®** scanning sends hard copy directly to a PC desktop where it can be easily moved into word processing applications, spreadsheets and databases for editing, distribution and storage.
- **Xerox FreeFlow® SMARTsend** makes routing and distributing scanned files easy.
- **Scan to Applications/Network File Server** makes large volumes of hard copy available to anyone on your network.
- **Scan to Searchable PDF** makes scanned content available to search engines.
- **Scan to Mailbox** stores scanned images on the WorkCentre hard drive, for retrieval via web browser.
- **Scan to Repository/Digital Archive** moves documents into electronic filing systems for easy access.
- **Scan to Home** sends scanned images directly to a user's personal directory, such as "My Computer," using the authenticated user's credentials to gain access.
- **Scan to Email/Distribution List** includes LDAP functionality, for integration with corporate email directories.
- **Scan to Electronic Document Management System** makes sure your documents are secure and easy to access.

- **Scanning Color Documents** preserves all the color information for later use in electronic files or color printing or copying.

Print features

Powerful print features are accessed primarily through the bidirectional print driver which allows users to easily build their jobs by selecting paper types, finishing options, security settings, and more in-depth features such as page-level programming for jobs including covers, tabs/inserts, special colored pages, and more. The print driver supports both PCL® and PostScript® printing with the same interface, and users can view job status, supplies and system settings, and troubleshooting information as well.

Fax features

The WorkCentre 7755 / 7765 / 7775 also offers optional fax capabilities that help further consolidate office functions. This full-featured fax solution combined with the concurrency of the WorkCentre 7755 / 7765 / 7775 means an end to supporting a dedicated fax machine. Fax features include:

- **Internet Fax** to any remote internet fax terminal, including another WorkCentre device. Internet Fax takes advantage of your existing network and integrates easily with your email server, eliminating

costly long-distance charges. You can receive and print documents sent from any compliant Internet Fax device or email client, allowing more effective use of assets and reducing the number of devices on your network.

- **Network Server Fax** gives you an integrated solution that maximizes your network fax investment. It's as easy as walk-up copying. Maintain central management and control of your fax server while providing versatile walk-up fax input and output options at your WorkCentre, including two-sided scanning and printing, stapling, and even secure printing of your fax documents. There is no need for a separate telephone line, and there are fewer devices and supplies to maintain. Visit the Xerox Partner web site for a complete listing of Xerox validated network server fax providers.
- **Embedded Fax** is the solution for traditional telephone fax workflows. With WorkCentre Embedded Fax you can fax while printing or copying and eliminate separate fax machines. The dual-line option enables concurrent sending and receiving. Print faxes on special paper, or have them stapled. Use the secure fax feature for faxes that are for your eyes only.

- **LAN Fax** makes faxing electronic files as easy as printing. LAN Fax saves you the time and hassle of printing documents to be faxed by allowing you to fax the document electronically via the WorkCentre 7755 / 7765 / 7775 print driver.

Copy features

Concurrent processing in the WorkCentre 7755 / 7765 / 7775 means users can scan the next copy job, even while the print engine is busy keeping lines from forming at the machine during periods of heavy use. The powerful and easy-to-use front panel allows for granular programming of copy jobs and includes features such as sample set, mixed-size originals, and the ability to work around jobs that require media not currently loaded into the system.

Media support and capacity

A wide range of paper sizes and weights are supported. Paper sizes up to 13 by 19 in. (330 x 483 mm) are supported through the bypass tray. Labels and card stock run effortlessly with great reliability. All trays support media up to 110 lb. index (220 gsm), with up to 170 lb. index (300 gsm) through the bypass tray and auto duplex support up to 176 gsm. Save money by bringing outsourced work in-house with the media and finishing flexibility of the WorkCentre 7755 / 7765 / 7775.

Upgradability/extensibility

Upgrade as your needs change and add more powerful document distribution capabilities such as network scanning, email, or additional faxing or network accounting capabilities. You can also add paper handling and finishing options to extend the functionality of your MFP system.

Concurrency

To keep your users productive and avoid bottlenecks at the MFP, the controller in the WorkCentre 7755 / 7765 / 7775 is equipped for concurrent operation. Many MFPs can only perform one function at a time — so if the device is in the midst of a long print run, a user couldn't process a scan job or send a fax until the print job is complete. Xerox has preempted this situation by enabling the WorkCentre 7755 / 7765 / 7775 to continue to process fax and scan jobs, and also program and queue additional copy jobs, while the print engine is busy.

Section 1: Evaluating Workgroup Color Multifunction Printers

Evaluate Installation and Deployment

Installing and deploying a fleet of multifunction printers throughout your organization is a potentially time-consuming, complicated process. The process isn't limited to physically placing the units in their new environments, but also includes integrating the devices with the existing network infrastructure. Also consider the process required to deploy printing and scanning services to your users, and how automated that process can be.

How the WorkCentre 7755 / 7765 / 7775 multifunction printer exceeds the installation and deployment requirements:

Installation

When you choose Xerox, you can rest assured that your equipment will be delivered and installed into your environment to your specifications and expectations. All network-enabled configurations include an embedded 10/100/1000 Base-TX Ethernet connection with innovative features like auto IP addressing, device naming, and Ethernet speed sensing to provide simple and automatic installation on networks. These features make the WorkCentre quick and easy to get up and running. Management and system setup can be accomplished through a variety of means, including the easy, wizard-based process found within Xerox CentreWare® Web. Additionally, the WorkCentre can integrate with third-party management applications like Unicentre® TNG, IBM® Tivoli® NetView®, Microsoft® Management Console, and HP WebJetAdmin. Cloning capabilities allow fleets of devices to be installed with identical settings, eliminating the need to set up each system individually.

Deployment

With the WorkCentre 7755 / 7765 / 7775, print and scan drivers can be deployed centrally, thereby eliminating the need for IT staff to perform desk-to-desk manual installation of the driver software. In many cases, existing Xerox drivers on your network can work with your new hardware, potentially saving the step of updating your users' driver software altogether. Again, wizards are provided within CentreWare Web to aid in installing, troubleshooting, and upgrading your users' driver software, freeing up your IT staff for more pressing projects.

Plus the WorkCentre 7755 / 7765 / 7775 supports two innovative new print drivers that can greatly simplify installing, managing and supporting printers and multifunction devices on the network, and increase end-user productivity:

- **Xerox Mobile Express Driver (X-MED)** makes it easy for mobile users to find, use and manage Xerox and non-Xerox devices in every new location. Plug into a new network, and X-MED automatically discovers available printers and provides status and capability informa-

tion. Save a list of "favorite" printers for each location, store application print settings for use on any printer in any network, and greatly reduce mobile support calls to IT.

- **Xerox Global Print Driver (X-GPD)** is a truly universal print driver that lets IT administrators install, upgrade and manage Xerox and non-Xerox devices from a single driver. It provides a consistent, easy-to-use interface for end-users, reducing the number of support calls, and simplifying print services management.

In addition, these drivers provide users with a consistent single interface for all printers, with real-time, dynamic reports of printer status. As a result, users can easily identify the best printer for their needs, quickly choose the correct options and see updated consumables status without the assistance of IT. To learn more, and download X-GPD and X-MED free, visit xerox.com/global and xerox.com/mobile.

Section 1: Evaluating Workgroup Color Multifunction Printers

Evaluate Ease-of-Use and Management

Look for fully integrated functions that work together to create more value than the sum of their parts. Are the functions easy to learn? Is the user interface consistent from function to function? Do the network features give users full access to the power of your network? Does the device include additional software to take full advantage of digital documents? Is the device easy for your IT organization to manage as part of its infrastructure?

How the WorkCentre 7755 / 7765 / 7775 multifunction printer exceeds the ease of use requirement

Front panel user interface

It doesn't matter if a job is simple or complex — the newly engineered color touch screen interface is easy to learn and offers quick job programming. It features bright, intuitive icons and easy access to all major functions directly from the home screen. A selection of buttons accompanies the touch screen for manual command and number inputs, management features access, and job execution (with the familiar green Start button). Third-party applications can be integrated with the touch screen interface as well.

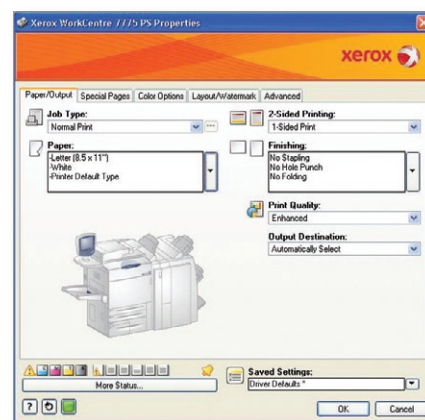
Accessible advanced features

Advanced features like Covers, Transparency Interleave and N-up give you a variety of output options. And with Build Job, you can easily integrate documents from the document handler and the platen, or from different paper trays — you can even mix simplex and duplex output into a single job. Use Sample Last Segment to review or change the output of your job section

by section. There's no need to rescan the entire job if you make an error, use "Sample Set" to run a proof set of the entire job to be sure the output exactly matches your requirements before it's printed.

Bidirectional print drivers

Print-capable versions of the WorkCentre 7755 / 7765 / 7775 include CentreWare® print drivers, which feature a clear, graphical user interface that provides an easy, intuitive way to interact with the printer. The drivers provide immediate desktop access to all WorkCentre output functions. The drivers also provide bidirectional information, indicating device and job status, currently loaded paper sizes and types, and installed options — so there is no need to consult other software in order to obtain this information. Advanced functions such as Watermarks, Invert Image, Edge Erase, N-up, Booklet Layout, Transparency Interleaving, Covers and Toner Saver are simple to access from the print drivers and front panel. Easy-to-understand icons access the most commonly used functions, such as paper select and document finishing. Plus with the Saved Settings feature, frequently used print job parameters can be stored for reuse.



Intuitive, bidirectional print drivers provide easy access to all output functions.

Healthcare

Streamline document routing, expedite collaboration. Create personalized scan menus, retrieve scanned files, and route documents to pre-assigned recipients, such as insurance companies and other practitioners, quickly and easily — all from your multifunction printer.

Legal

Maintain confidentiality, save time. Legal professionals can quickly and securely scan documents to custom network locations — such as case-specific or attorney-specific folders — with access and routing options based on their user ID.

Education

Focus on teaching, not paperwork. Teachers can use a customized touch screen interface to access course-specific documents stored on the network — and quickly print them — directly from the multifunction printer.

IT

IT professionals enjoy ease of integration. Managing applications across a fleet of devices is easy. Make updates at the server level and those changes become live on all EIP-devices on the network, regardless of location or product model, eliminating the need to load software on each individual device.

How the WorkCentre 7755 / 7765 / 7775 multifunction printer exceeds the ease of management requirement

Xerox Extensible Interface Platform™ (EIP)

Xerox EIP is a software platform inside the WorkCentre 7755 / 7765 / 7775 that enables personalized solutions users can access right from the device touch screen. These applications can leverage your company's existing databases and meet your specific business challenges.

Users benefit from simplified and personalized workflows

- Simplify user experience. A user swipes his or her company ID badge at the device, and an EIP solution can present user-specific print jobs, workflows and settings on the touch screen.
- A new employee becomes productive immediately; instead of needing to learn a complex order fulfillment sequence, he or she simply scans in a paper order, presses a button on the touch screen, and the EIP application correctly routes the order.

Get more out of your hardware and infrastructure investment

- EIP applications leverage your existing databases and systems. This two-way communication allows you to query your databases and choose the appropriate customer or project folder when storing a scanned document.

- Reduce abandoned print jobs and increase productivity. Send documents to a virtual queue and an EIP application can let you log onto any available device on the network to print your job.

IT professionals enjoy ease of integration

- Managing applications across a fleet of devices is easy. Make updates at the server level and those changes become live on all EIP-devices on the network, regardless of location or product model, eliminating the need to load software on each individual device.
- Use active directory to provide various departments and groups access to certain features and personalized scanning workflows.

In-house developers can tailor applications to address unique needs

- Build user-friendly touch screen interfaces that work the way your business works.
- EIP is based on web standards such as HTML, CSS, XML and JavaScript, speeding programming and making new application development fast and easy.

Automated supplies replenishment

Xerox offers SMart eSolutions*, an application for automating and simplifying device management and ownership. The two SMart eSolutions applications, MeterAssistantSM and SuppliesAssistantSM, automate the process of reporting MFP usage data to Xerox and automatically ordering replacement supplies when toner levels run low.

- MeterAssistant — automatically collects and securely submits your device meter reads to Xerox using a built-in audit process to increase billing accuracy
- SuppliesAssistant — proactively manages toner supplies and monitors usage to ensure you have the right supplies at the right time

Network management

It couldn't be easier for the network administrator; The WorkCentre 7755 / 7765 / 7775 integrates seamlessly into virtually any network environment. Network configuration is easy with CentreWare install wizards — which eliminate the need for IT staff to reset parameters, connect users or manage job queues device by device. Onboard SNMP support lets customers integrate with other network frameworks.

Xerox CentreWare software

Xerox CentreWare® Web management software is a powerful device-management solution for IT, free software eases the chore of installing, configuring, managing, monitoring and pulling reports from the networked printers and MFPs throughout an enterprise, regardless of their manufacturer. Xerox also addresses enterprise asset management through compatibility with network management tools for Sun, Novell, Microsoft and other environments.

WorkCentre 7755 / 7765 / 7775 also includes CentreWare Internet Services (CWIS), an embedded web server that allows employees and IT personnel to perform detailed status checks on the system

and consumables, administer system settings, and manage access and accounting controls via any standard web browser.

Xerox office services

Lastly, Xerox offers a set of services for managing document output and asset infrastructure in offices. These services deliver measurable business results by leveraging a powerful set of office technologies, business processes, methodologies and software tools to reduce costs and improve productivity. These offerings are summarized in Section 3 of this guide.

***SMart eSolutions is available in the U.S. only.**

Section 1: Evaluating Workgroup Color Multifunction Printers

Evaluate Reliability

Office productivity relies on tools that do their jobs day in and day out. Consider how often you need to intervene to replace paper or other consumables or to clear jams. How easy is that intervention, and how long is the device typically down? If outside assistance is required, how easy is it to schedule and how long do you have to wait? Is the device a reliable network citizen? Has it been tested and certified by independent industry participants?

How the WorkCentre 7755 / 7765 / 7775 multifunction printer exceeds the reliability requirement

Day-to-day reliability

Simple paper paths and a minimum of moving parts mean there is very little that can go wrong. Any paper jams or misfeeds that do occur are all accessed from the front of the machine, making these easy issues for users to resolve without calling the IT Help Desk. Most components that wear out over time can simply be replaced without a service call. You're up and running without delay.

The WorkCentre 7755 / 7765 / 7775 has been engineered to minimize user interventions and downtime. One clear example: In most office environments, a majority of the documents copied and printed on the MFP will be black-and-white. The WorkCentre 7755 / 7765 / 7775 has been specifically designed with two black toner cartridges to double the black toner capacity and help avoid machine downtime.

Other advancements that contribute to the reliability of the WorkCentre 7755 / 7765 / 7775:

- The short, straight paper path also allows the WorkCentre 7755 / 7765 / 7775 to reliably handle heavyweight paper — up to 110 lb. index (220 gsm) from Trays 1 through 4, and up to 170 lb. index (300 gsm) from the Bypass Tray.
- Easy-access SMart Kit™ customer replaceable units include:
 - EA-HG toner cartridges
 - Waste toner container
 - Fuser module
 - Print drums
 - Staple cartridges

Service / support

Building on the reliability that is engineered into the WorkCentre 7755 / 7765 / 7775, Xerox has trained and developed a sophisticated service-delivery network that helps you maintain your equipment, address

equipment issues that you may encounter, and train you and your users on how to get the most out of your equipment.

Certifications

The WorkCentre 7755 / 7765 / 7775 has been evaluated for functionality and quality by a number of independent entities and has been awarded the following certifications:

- FCC Class A Compliant (US), DOC Class A Compliant (Canada)
- 89/336/EEC (Europe)
- UL Listed (UL 1950, Third Edition)
- CB Certified (IEC 60950/EN 60950)
- 73/23/EEC (Europe)
- 95/5/EEC (Europe)
- ENERGY STAR®
- GOST

Section 1: Evaluating Workgroup Color Multifunction Printers

Evaluate Security Capabilities

What types of security requirements are critical to your office? Does the device have the security features to meet these demands? Can device access be password protected? Does the system remove latent images on its hard drive? Does the system have features in place to protect confidential documents?

How the WorkCentre 7755 / 7765 / 7775 multifunction printer exceeds the security capabilities requirement

Integrated security

Xerox is committed to the security of its products and takes a unique approach to security within the document industry: Xerox believes security should be built in as a core component of the MFP system and its controller.

The WorkCentre 7755 / 7765 / 7775 offers built-in security features for physical and network-based access controls, user authentication, usage tracking, file encryption, and file deletion to fully comply with the IT organization's information security policies. This is accomplished through intelligent design architecture that complies with stringent industry security standards and increasing regulations in the government, military, health care (HIPAA), legal (Sarbanes-Oxley), financial (Gramm-Leach-Bliley Act) and pharmaceutical (FDA 21 CFR Part 11) sectors. The security capabilities of WorkCentre 7755 / 7765 / 7775 MFPs can be further extended with solutions from Xerox Alliance Partners.

Security features of the WorkCentre 7755 / 7765 / 7775 include:

- **802.1x Support** — Ensures devices connected to the network are properly authorized
- **Analog Fax and Network Isolation** — Controller architecture isolates the fax telephone line and the network connection to foil incoming attacks
- **Authentication**
 - **System Administrator Authentication** — The WorkCentre 7755 / 7765 / 7775 allows access to administrative web pages to be restricted to authorized employees. Device Access Password Protection further restricts access to device setup screens and remote network settings
 - **Network Authentication** — Manage access to copy, scan, email, and fax features by validating network user names and passwords
 - **Copy Auditron** — Restricts user access to the device, sets limits for users and groups, tracks jobs and provides reports
- **Firewall** — Restricts access via IP Address Filtering, Domain Filtering, and Port Blocking
- **Image Overwrite Security** — Electronically erases data that has been processed to the hard disk in print, copy, scan, and fax modes using a three-pass algorithm specified by U.S. Department of Defense Directive 5200.28-M at regular, pre-selected times
- **Internal Security Audit Log** — Permits tracking of activity at the device, satisfying the needs of organizations that must provide logging of the transfer of Personally Identifiable Information per regulations like HIPAA, Sarbanes-Oxley, Gramm-Leach-Bliley Act, and more.
- **IPv6 Support** — Built-in support for networks utilizing the IPv6 standard
- **Hide Print Job Name in Queue** — Hides or obscures document names when the job queue is viewed from the front panel or via CentreWare IS
- **LDAP Authentication/Secure LDAP** — Adds ability to configure LDAP requests to only people with user IDs are sent to and authenticated by the LDAP server

- **LDAP Filtering** — Prevents unauthorized network access based on IP address or port number
- **Print Channel Encryption** — Delivering secure communication via IPSec
- **Secure Data Protocols** — The WorkCentre 7755 / 7765 / 7775 supports HTTPS, enabling CentreWare Internet Services setup via industry standard Secure Sockets Layer (SSL) technology
- **Secure Print** — Unlimited Secure Print holds jobs at the device until the owner releases them with the PIN code
- **Secure Scanning and Network Management** — Includes support for SNMPv3 and HTTPS
- **User Data Encryption** — Files saved to and read from the WorkCentre 7755 / 7765 / 7775, hard drive are encrypted
- **Xerox Secure Access (optional)** — Smart card-based user authentication for device access

Common Criteria certification

The National Information Assurance Partnership (NIAP) is a U.S. government initiative to meet the security testing of Common Criteria, and is a collaboration between the National Institute of Standards and Technology (NIST) and the National Security Agency (NSA). Common Criteria for IT Security Evaluation is an internationally recognized methodology (ISO 15408) for evaluating the security claims of hardware and software vendors. The five major elements of Common Criteria are availability, integrity, confidentiality, accountability and non-repudiation. Xerox submits its products, along with highly structured statements describing the products' information security capabilities, for validation by an independent, government-sponsored laboratory for testing and certification. Certification is a costly, rigorous and time-consuming process — the WorkCentre 7755 / 7765 / 7775 is currently under evaluation.

Check the Xerox security pages (www.xerox.com/security) or the Common Criteria Portal (www.niap-ccevs.org), for more up-to-date information. Xerox currently has more MFP products certified than any other vendor in the industry.

Section 1: Evaluating Workgroup Color Multifunction Printers

Evaluate Cost Control

One of the most important considerations when evaluating an MFP with color capabilities is its cost of operation. Does the vendor provide the tools you need to control access and use of the system's color features? Are the accounting tools available to help track and assign printing costs? Does the vendor offer tools and services to help you right-size your deployment?

How the WorkCentre 7755 / 7765 / 7775 multifunction printer exceeds the cost control requirement

All WorkCentre 7755 / 7765 / 7775 multifunction printers separate color and black-and-white page counts to allow for separate billing of these pages.

Color Access Cost Control

Two features have been specifically developed to ensure color and black-and-white copies and prints are accurately accounted for, and that access to walk-up color copying features can be managed.

- **Color Access** — requires a login in order to access color copying while allowing uninterrupted black-and-white copying.
- **Automatic Color Copy** — the devices detect black-and-white and color pages separately in the original source document and print and charge for them at their different rates. In addition, you can select "Black-and-White Only" to copy color documents in black-and-white. These output settings can be assigned as the copy default for these devices to limit color usage and manage costs.

- **Automatic Color Print** — the devices detect black-and-white pages within a print job even with the output selection set to Color. The black-and-white printed pages are then printed and charged at the black-and-white rate.

The Copy Auditron feature can both track and control usage. You can configure the Auditron to limit the number of color pages, black-and-white pages, or both that a particular user or group may use. For example, you can limit certain users to black-and-white only.

In addition to these WorkCentre 7755 / 7765 / 7775 management capabilities, Xerox Standard Accounting provides job based accounting features for greater cost control of printing, copying, faxing and scanning.

Assessment options

Xerox can help you decrease your overall document costs by optimizing and right-sizing your technology deployment. Three levels of assessment tools and services are available to help you deploy the right mix of equipment to best serve the needs of your environment:

- **LEVEL 1: Xerox Office Efficiency Calculator** — A five-minute, web-based "instant analysis" offers suggestions on your technology needs by comparing information you enter on your environment against key industry metrics.
- **LEVEL 2: Xerox Office Productivity Advisor (XOPA)** — More in-depth, web-based tool assesses your specific document environment. XOPA results suggest better ways to manage page volume between printing, copying and faxing — they deliver end user satisfaction and cost efficiency. XOPA is a free service performed by your local Xerox sales representative.
- **LEVEL 3: Xerox Office Document Assessment (ODA)** — An analytical model that measures and analyzes your current document production infrastructure, the ODA provides in-depth improvement plans for significant cost savings and increased efficiency. The ODA is a six-sigma, fee-based tool and consultative service oriented more at enterprise-level organizations.

Section 1: Evaluating Workgroup Color Multifunction Printers

Evaluate Finishing Capabilities

What finishing requirements does your office or department require? Does the finisher have the capacity to meet your demands? Can the finisher staple or hole-punch your multipage documents in a variety of locations? Can multipage documents be precollated to expedite the output? Can you select from multiple finishers to meet your specific requirements?

Multiple finishing options let you choose the capabilities that are right for individual workgroups.



How the WorkCentre 7755 / 7765 / 7775 multifunction printer exceeds the finishing capabilities requirement

Whether you need unstapled output, 100-sheet multiposition-stapled output, hole-punched documents, or fully finished saddle-stitched booklets, the WorkCentre 7755 / 7765 / 7775 has finishing options to meet your needs.

- The Advanced Office Finisher boosts output capacity to 3,500 sheets and adds 50-sheet multiposition stapling and hole-punching capabilities with two separate output trays.
- The Professional Finisher with Booklet Maker extends the capabilities to include bi-folded booklets (5 sheets maximum), saddle-stitching, and center-folded booklets (15 sheets maximum) with three output trays.

- The new Light Production Finisher with optional folding delivers 100-page stapling with wire-cut stapler, booklet maker and post-process interposer. Optional C and Z folding is available, with support for Letter, Tabloid, A4 and A3 paper sizes.

With these finishing options, you can create training brochures, newsletters, manuals, and other professional-looking documents on demand in color and black-and-white.

Section 2: Introducing the Xerox WorkCentre 7755 / 7765 / 7775 Multifunction Printer

Product Overview

The Xerox WorkCentre 7755 / 7765 / 7775 multifunction printer thrives in document-intensive office environments where the workloads are demanding, security's a must, and ease-of-use and ease-of-management truly matter.

Performance to increase productivity

Why crowd the office with multiple devices when one can meet all your needs? The WorkCentre 7755 / 7765 / 7775 has the features you use everyday and the power to be true multitaskers.

- Up to 75 ppm copy and print speeds. Enhance office productivity with full color at a speedy 50 ppm!
- Fast scanning up to 80 ppm (50 ppm in color). Your department can swiftly scan, retrieve, electronically store and distribute documents.
- Multiple users can simultaneously perform different tasks at the device – scan, copy, print, transmit faxes and manage the queue – a helpful feature in maximizing business efficiency.
- A wide range of finishing options are available. Short production runs can be efficiently handled in-house, saving time and money.

Easier from end to end

Running complex jobs doesn't have to be complicated. From the large touch screen interface and bi-directional print drivers to simple job-based reporting and accounting tools, the WorkCentre 7755 / 7765 / 7775 is designed with reliability and ease of use in mind.

- User intervention is kept to a minimum. Two black toner cartridges means toner lasts longer and can be replaced on the fly. And SMart Kit™ technology ensures the device is kept up and running.
- New, re-engineered color touch screen interface features bright, intuitive icons and easy access to all major functions directly from the home screen.
- Green print features. Automatic earth-friendly print settings allow for not only improved productivity but also for cost savings and environmental sustainability. Options include default duplex, proof print, no banner, recycled paper and draft mode.
- Manage every device. Using Xerox CentreWare® Web, IT administrators can easily install, configure, manage, monitor and report on printers and multifunction devices across the network, regardless of manufacturer.
- Smart eSolutions system simplifies ownership, with hands-free, hassle-free, secure administration of Xerox devices for automatic meter reads.
- Xerox Standard Accounting monitors not only the pages your office produces, but also who produced them. Manage access and gather data for print, copy, scan and fax output — black-and-white and color.



WorkCentre 7775 shown with Offset Catch Tray

For more information regarding Xerox security, visit: www.xerox.com/security

Add a color server for sophisticated color control and document management

EFI® Fiery® Integrated Controller

You can count on world-class color and an easy-to-use workflow with this built-in network controller. Its Command WorkStation® makes it easy to program, monitor and manage workflows. Color-management tools enable precise color from all applications, platforms, and formats. Precise color matching tools ensure total color quality control in the printing workflows of graphic arts professionals. Options include a Secure Disk Erase Kit, Impose 2.7, EFI Color Profiler, Memory, an X-Rite® DTP 32 Series II Densitometer and Hotfolders.

- Automatic Information Forwarding automatically enables the collection and sending of reports to Xerox for quicker and better service.

State-of-the-art security

The WorkCentre 7755 / 7765 / 7775 incorporates some of the strongest security features in the industry, ensuring that your document production workflow, often overlooked in security checks, is well-protected.

- Network Authentication restricts access to scan, email and network fax features by validating user names and passwords prior to use. With Audit Log capabilities you'll know who sent what and when.
- Secure Print prevents unauthorized viewing by holding jobs in the queue until a PIN is entered, releasing documents to print. Secure Print job submission utilizes IPsec.
- Image Overwrite eradicates data by overwriting the disk surface with patterns of data.
- Embedded Fax prevents unauthorized device access via the fax subsystem. There is complete separation of the fax telephone line and the network connection.
- Device Access Password Protection ensures administrative set-up screen and remote network settings cannot be viewed or altered without authentication.
- IP Address Restriction (IP Filtering) controls communications with specific network clients. Operates in IPv4 and IPv6 environments.
- Secure Scan transmits files using HTTPS (SSL).
- Secure Device Administration with HTTPS is enabled through CentreWare.
- 802.1x Port Based Network Access Control ensures that devices that are connected to the network have the proper authorization.
- Secure Access Unified ID System enables users to log-in at the device with their magnetic or proximity ID card for secure access to functions that need to be tracked for accounting or regulatory requirements.

Color: in-house and under control

Add the impact of color and take advantage of tools that let you choose when, where and how much color your business needs.

- Nothing gets noticed like color. 2400 x 2400 dpi output resolution with 256 halftones gives your documents unmatched clarity and impact.
- Emulsion Aggregate High-Grade toner delivers a professional glossy finish on documents where impact is the key. Trickle Charge Development (a Xerox innovation) maintains high image quality throughout the job.
- You only pay for color on pages that use color, making it more cost-effective to print jobs with mixed color/black-and-white documents.
- Regulate access to color to control costs. Allocate color-page limits by user, department, etc.
- Built-in reporting functions let you track all services — print, copy, scan, fax and email, as well as color printing and copying — making usage decisions easier in the future.

Section 3: Inside the WorkCentre 7755 / 7765 / 7775

Multifunction Printer

Feature Review



1

250-sheet Duplex Automatic Document Feeder (DADF) simplifies the copying and scanning of large jobs.

2

5 standard trays have a total paper capacity of 3,260.

3

Optional high-capacity feeder for those long job runs. Just load and go.

4

Increased toner capacity. Two black toner SMart Kit™ replaceable units keep replenishment interventions to a minimum and productivity to a maximum.

5

Optional finishers (Professional Finisher shown) add the final touches to professional documents.

6

A short, straight paper path prevents jams while providing heavier media feeding capability and increased reliability. Center registered feeding results in accurate registration and less paper skew.

7

Trickle charge development system – unique to Xerox – maintains print consistency all day long. You never have to do a quality check at the eleventh hour.

8

New 2400 dpi resolution delivers excellent image clarity in both prints and copies. Plus, to maintain consistently brilliant image quality, the device employs the new Charge Corotron Cleaning Assembly.

Section 4: Configurations, Specifications, Supplies, Options, Support and Additional Information Sources

Configuration Summary



		WorkCentre 7755	WorkCentre 7765	WorkCentre 7775
Speed		Up to 55 ppm black-and-white / 40 ppm color	Up to 65 ppm black-and-white / 50 ppm color	Up to 75 ppm black-and-white / 50 ppm color
Duty Cycle		200,000 pages / month	250,000 pages / month	300,000 pages / month
System Memory		2 GB, 80 GB Hard drive		
Paper Handling	Paper input	Standard Duplex Automatic Document Feeder: 250 sheets Trays 1–2: 500 sheets each; Size: Standard selectable sizes up to 11 x 17 in. / A3 Tray 3: 870 sheets; Size: 8.5 x 11 in. / A4 Tray 4: 1,140 sheets; Size: 8.5 x 11 in. / A4 Bypass Tray (Tray 5): 250 sheets; Size: Custom sizes up to 13 x 19 in. / SRA3; Total: 3,260 sheets		
	Paper output	Optional High Capacity Feeder: 2,000 sheets; Size: 8.5 x 11 in. / A4; Total: 5,260 sheets Optional Offset Catch Tray (OCT): 500 sheets Advanced Finisher: 500-sheet top tray, 3,000-sheet stacker tray, 2/3-hole punching and 50-sheet multiposition stapling Professional Finisher with Booklet Maker: 500-sheet top tray, 1,500-sheet stacker tray, 2/3-hole punching, 50-sheet multiposition stapling, saddle-stitch booklet maker, bi-folding Light Production Finisher: 500-sheet top tray, 2,000-sheet stacker tray, hole punching, 100-sheet multiposition stapling, saddle-stitch booklet maker, bi-folding, 200-sheet post-process interposer, optional C- and Z-folding Convenience Stapler: 50-sheet stapling		
Copy		As fast as 5.5 seconds black-and-white / 8.9 seconds color		
First-page-out-time		As fast as 5.5 seconds black-and-white / 8.9 seconds color		
Resolution (max)		2400 x 2400 dpi		
Copy features		Automatic two-sided, auto reduction and enlargement (25 %–400 %), auto paper select, auto tray switching, mixed-sized originals, booklet creation, image quality enhancements, Build Job, book copying / two-sided book copying, auto color selection, transparencies, booklet creation, multi-up, invert image, covers, annotation and Bates™ stamping (with color capability), inserts and tab copying, sample set and job storage, heavy-weight paper		
Print		1.33 GHz Freescale Processor / PCL® 5c, PCL 6 emulation, Adobe® PostScript® 3™, PDF v1.6		
Processor / PDL Support		1.33 GHz Freescale Processor / PCL® 5c, PCL 6 emulation, Adobe® PostScript® 3™, PDF v1.6		
Connectivity		10/100/1000 Base-TX Ethernet		
Resolution		2400 x 2400 dpi		
Print features		Delay, Sample and Secure Print, simultaneous rip, receive, Program Ahead, queue-process and transmit, Bi-directional print drivers, Page-level programming, Tab printing, Embedded Web Server for remote control/monitor/setup, Job monitoring at device and at desktop		
Fax	Optional	Walk-up Fax (one-line and two-line options), LAN Fax, Internet Fax, Network Server Fax, Fax Forward to Email		
Scan	Optional	Network scanning, Scan to email, Scan to PC Desktop®, Scan to Mailbox, Scan to searchable PDF, PDF/A and XPS®		
Other Options		Foreign Device Interface, Xerox Copier Assistant, USB 2.0, Xerox Secure Access Unified ID System, Fiery Network Server, Work Surface, Unicode Printing		
Security		Fax Security, Secure Print, Audit Log, Secure Workflows, 802.1x, SNMP V3, Network Authentication, Device Access Password Protection, IP Filtering, Disk Image Overwrite		
Accounting		Xerox Standard Accounting (Copy, Print, Scan, Fax, Email), Additional Job Based Accounting Options available		

Section 4: Configurations, Specifications, Supplies, Options, Support and Additional Information Sources

Specifications

Specifications	
Device Management	Xerox CentreWare Web, Xerox CentreWare IS Embedded Web Server, Novell NDPS/NEPS, Xerox CentreWare for Unicenter TNG, Xerox CentreWare for Tivoli Netware, Xerox CentreWare for HP OpenView
Printer Driver Support	Apple: Mac OS® 8.x, 9.x, OS X, 10.3 and higher, Microsoft: Windows® 2000, Windows XP, Windows 2003 Server, Windows Vista, Novell: NetWare 4.x, 5.x, 6, Unix/Linux: Solaris 2.8/2.9/2.10, HP/UX 11.0, IBM AIX 5L v.5.3, Linux Fedora Core 1 and 5
Media Handling	
Supported Sizes	Trays 1 and 2: Standard sizes up to 11 x 17 in. (A3) Trays 3 and 4: 8.5 x 11 in. (A4) Bypass Tray (Tray 5): Custom sizes up to 13 x 19 in. (SRA3) Optional High Capacity Feeder: 8.5 x 11 in. (A4) DADF: Up to 11 x 17 in. (A3)
Supported Weights	Trays 1 through 4: 17 lb. bond to 110 lb. index (64 to 220 gsm) Bypass Tray (Tray 5): 17 lb. bond to 170 lb. index (64 to 300 gsm) Optional High Capacity Feeder: 17 lb. bond to 110 lb. index (64 to 220 gsm) DADF: 16 lb. bond to 100 lb. index (64 to 300 gsm)
Operating Environment	Required Temperature Range: 50° to 90° Fahrenheit (10° to 28° Celsius) Required Relative Humidity: 15% to 85% Sound Power Levels: Operating: 53 dB(A), Standby: 35 dB(A)
Electrical	Power (North America): 110–127 VAC +/- 10%; 50/60 Hz +/- 3%, 20 A Power Consumption: Running – < 1131 watts/hour, Standby – < 285 watts/hour, Low Power Mode – < 218 watts/hour, Auto Off/Sleep Mode – < 23.7 watts/hour Warm Up Times: Warm-up Ready to Copy – < 28 seconds (recovery from sleep), Warm-up Ready to Print – < 130 seconds (recovery from sleep), Low Power Recovery – < 20 seconds
Dimensions (Width x Depth x Height)	Offset Catch Tray: 62 x 31 x 57 in. (1,573.6 x 787 x 1,460 mm); Weight: 611 lbs. (277.7 kg) Advanced Office Finisher: 82.5 x 31 x 57 in. (2,096 x 787 x 1,460 mm); Weight: 773.7 lbs. (351.7 kg) Professional Finisher: 82.5 x 31 x 57 in. (2,096 x 787 x 1,460 mm); Weight: 834.7 lbs. (379.4 kg) Light Production Finisher: 98 x 31 x 57 in. (2,286 x 787 x 1,460 mm); Weight: 876 lbs. (398.2 kg) Light Production Finisher (with Folding): 98 x 31 x 57 in. (2,286 x 787 x 1,460 mm); Weight: 1,003 lbs. (455.9 kg)
Certification	FCC Class A Compliant (US), DOC Class A Compliant (Canada), 89/336/EEC (Europe), UL Listed (UL 1950, Third Edition), CB Certified (IEC 60950/EN 60950), 73/23/EEC (Europe), 95/5/EEC (Europe), Energy Star

Section 4: Configurations, Specifications, Supplies, Options, Support and Additional Information Sources

Supplies and Options

Supplies	Part Number	Description	Capacity
Toner Cartridges	006R01219	Standard Capacity Black Toner Cartridge	Average 30,000 standard pages ¹
	006R01222	Standard Capacity Cyan Toner Cartridge	Average 34,000 standard pages ¹
	006R01221	Standard Capacity Magenta Toner Cartridge	Average 31,000 standard pages ¹
	006R01220	Standard Capacity Yellow Toner Cartridge	Average 34,000 standard pages ¹
	008R12990	Waste Toner Bottle	Average 50,000 impressions ¹
	013R00602	Black Drum Cartridge	WC 7755 – Average 231,000 prints ² WC 7765 – Average 260,000 prints ² WC 7775 – Average 285,000 prints ²
	013R00603	CMY Drum Cartridge	WC 7755 – Average 100,000 prints ² WC 7765 – Average 115,000 prints ² WC 7775 – Average 115,000 prints ²
	013R00604	CC Assembly for Black Toner Cartridge	120,000 impressions
	008R12988	Fuser Assembly (120 V)	200,000 impressions ³
	008R12989	Fuser Assembly (220 V)	200,000 impressions ³
	008R12964	Staple Cartridge	For AOF and Convenience Stapler
	008R12941	Staple Refill	For AOF and Convenience Stapler
	008R12925	Staple Cartridge	For Professional Finisher and Light Production Finisher with Booklet Maker
	008R13029	Staple Cartridge	For Light Production Finisher

¹ Average standard pages. Declared Yield based on 5% area coverage on letter/A4-size page. Yield will vary based on image, area coverage and print mode.

² Declared Yield based on letter/A4-size 20 lb. (75 gsm) pages. Yield will vary based on media type, size, weight, and usage patterns.

³ Declared Yield based on an average job size of 4 pages. Yield will vary based on job run length, media size and orientation.

Options	Part Number	Product Code	Description
	497K02420	N/A	Offsetting Catch Tray
	097S03304	VKK	High-Capacity Feeder
	097S03306	VKM	Advanced Office Finisher
	097S03308	VKP	Professional Finisher (with Booklet Maker)
	097S03786	DTX	Light Production Finisher
	097S03620	APA	C-, Z-Folder Unit (for Light Production Finisher)
	498K08250	N/A	Convenience Stapler Kit (110 V)
	498K08260	N/A	Convenience Stapler Kit (220 V)
	098S04886	YRC	Foreign Device Interface Kit
	498K12240	N/A	IOT Mobility Plate
	498K12251	N/A	C-Finisher Mobility Plate
	498K16290	N/A	HCF Mobility Plate
	498K15810	N/A	D-Finisher Mobility Plate

Section 4: Configurations, Specifications, Supplies, Options, Support and Additional Information Sources

Support and Additional Information Sources

Unrivaled service and support

Behind every Xerox product is a large network of customer support that's unrivaled in the industry and available when you need it. Xerox service professionals use leading-edge technologies to keep you up and running. They're even linked to the engineers who designed your product, so you can be confident when you choose Xerox. And genuine Xerox supplies are always readily available.

Total satisfaction guaranteed

The exclusive Xerox Total Satisfaction Guarantee, recognized as unique in the industry, covers every Phaser device that has been continuously maintained by Xerox or its authorized representatives under a Xerox express warranty or Xerox Maintenance agreement. You decide when you're satisfied.

Xerox Office Services Support

Asset management services

- Asset Optimization and Tracking — Process and tools to optimize an enterprise's office output infrastructure and reduce hard costs
- Break-Fix Management — Single point of ownership and management for break-fix service of all brands of office output devices, regardless of manufacturer
- Supplies Management — Process and tools to procure, monitor and replenish all document-related supplies proactively

Imaging and output management services

- Output Management — Single point of management of office output from all output devices, regardless of manufacturer
- Image Capture and Workflow — Cost-efficient solutions for capturing, managing, retrieving and distributing information into digital repositories

Support services

- Technology Procurement and Deployment — A creative and flexible end-to-end print/computer product acquisition solution that uses a single-point-of-contact model while lowering the total cost of acquisition
- Help Desk Services — A broad range of enterprise services, managed through a centralized single point of contact and delivered through either an on-site or off-site model
- End User Services — Microsoft software implementation, IT project consulting, and customer education

Access managed services

- Student and Library Patron Access — Custom designed and implemented customer-managed solutions

Additional Information Sources

WorkCentre 7755 / 7765 / 7775 front panel:

- The front panel offers tools and information pages to help with machine setup, feature selections, operational problems, media feed and supply issues.

Customer Documentation:

- Installation Guide
- Quick Use Guide
- Software and Documentation CD-ROM
- Warranty Booklet

On the Web:

Visit www.xerox.com/office for:

- Product, supplies, and support information
- Downloading drivers
- Finding your local reseller
- Online documentation

Visit www.xerox.com/office/support for:

Support and service information, including the same troubleshooting Knowledge Base used by Xerox Customer Support staff to provide the latest technical information on:

- Application issues
- Errors
- Print-quality issues
- Troubleshooting

Questions? Comments? Problems?

If you have any questions, please contact your Xerox sales representative, call **1-800-ASK-XEROX**, or visit us on the web at **www.xerox.com/office**.

